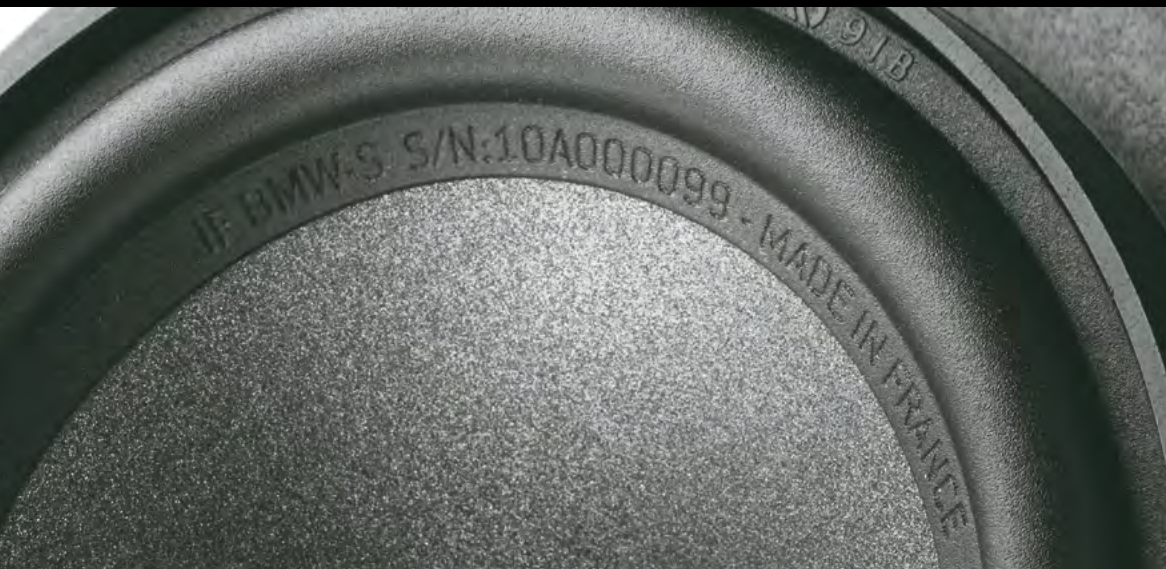


IFBMW DEDICATED KITS

2-way component and coaxial kits



 **Integration**
INSTANT GRATIFICATION

 **FOCAL**[®]
THE SPIRIT OF SOUND

IFBMW-C, IFBMW-S

100% DEDICATED TO REPLACING ORIGINAL EQUIPMENT



To pursue our involvement in new markets and to respond to the various problems which arise when improving original car audio systems, we are increasing our efforts in the integration market.

Our leitmotiv: to guarantee affordable audiophile sound whilst simplifying the installation process.

Two years after the launch of our first dedicated kit, the development of our Plug&Play line has resulted in **two new speaker driver kits** which are no longer specific to only one vehicle, but to various models of a world-renowned brand, BMW®.

This new range is composed of a 2-way component kit, **IFBMW-S** (a pair of woofers + a pair of tweeters) and a coaxial kit, **IFBMW-C**.

Our philosophy for these products remains the same, namely the compatibility or the optimum adaptability into the original locations of the manufacturer's most popular models: 3 Serie, 1 Serie and X1.

These Plug&Play kits have been designed for optimisation in terms of mechanics (installation in the original location) as well as in terms of acoustics.

Simplicity and pleasure!

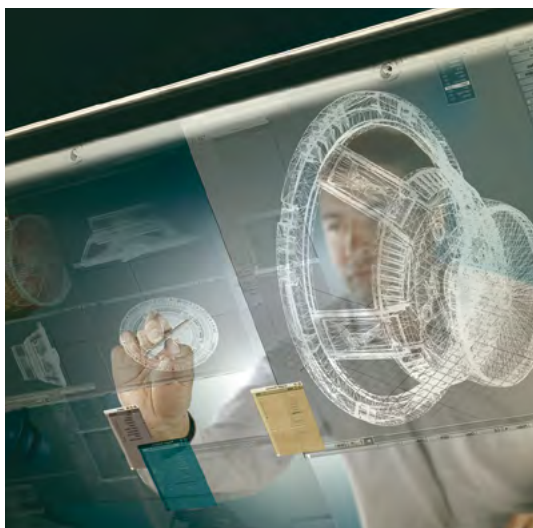
By guaranteeing a maximum installation time of one hour, and by keeping the factory head unit, the IFBMW-C and IFBMW-S provide the perfect solution to those car owners who wish to discover the pleasure of listening to the best audiophile sound on the market.

Performance and features:

- Aluminium/magnesium inverted dome tweeter with phase plug.
- Woofer equipped with a Polyglass cone and a plug for better dispersion.
- All the integrated crossovers facilitate fitting the speaker drivers into the original locations.

Everything is straightforward for the user because the car manufacturer's standards are used for the connectors. These kits, 100% made in France, are fully coherent with our ready-to-play logic. All the necessary components to carry out a sleek and discreet installation are supplied (speaker drivers + installation manual and video + specific tools for installation).

We manufacture world-renowned loudspeakers and the continuous innovation in our R&D department keeps our production workshops busy.



IFBMW-C

2-way component kit

Car compatibility:

- BMW 1 Serie (E81/82/87/88/F20*)
- BMW 3 Serie (E90/91/F30/F31*)
- BMW 5 Serie (F10*)
- BMW X1 (E84)



IFBMW-S

2-way coaxial kit

Car compatibility:

- BMW 1 Serie (E81/82/87/88/F2
- BMW 3 Serie (E90/91/F30/F31*
- BMW 5 Serie (F10*)
- BMW X1 (E84)



100% DEDICATED BMW®
(5 Serie / 3 Serie / 1 Serie / X1)
EASY TO INSTALL



Installation 100% dedicated to BMW (5 Serie / 3 Serie / 1 Serie / X1) in less than an hour.

IFBMW-C demonstration video: www.focal.com/en/ifbmw-c

IFBMW-S demonstration video : www.focal.com/en/ifbmw-s

* Technical wire adaptation to fit in those cars models.
Non-exhaustive list of vehicles (update on www.focal.com).

Enjoy the same acoustic quality in your car as in your living room...



Technical specifications



IFBMW-C

Woofer	4" (100mm)
Cone	Polyglass
Tweeter	Aluminum/magnesium inverted dome
Chassis	ABS (BMW® standard shape)
Voice coil	1" (25mm)
Magnet	2 ^{13/16} " (72mm)
Sensitivity (2.83V/1m)	90.5db
Nom. impedance	4 Ohms
Frequency response	85Hz - 22kHz
Max. power	80W
Nom. power	40W RMS
Crossover	Integrated to the cable (tweeter 18dB)



IFBMW-S

Woofer	4" (100mm)
Cone	Polyglass
Tweeter	Aluminum/magnesium inverted dome (100% compatible with factory housing)
Chassis	ABS (BMW® standard shape)
Voice coil	1" (25mm)
Magnet	2 ^{13/16} " (72mm)
Sensitivity (2.83V/1m)	90.5db
Nom. impedance	4 Ohms
Frequency response	85Hz - 22kHz
Max. power	80W
Nom. power	40W RMS
Crossover	Integrated to the cable (tweeter 18dB)
Tweeter support	Tweeter basket is provided for use should the car not be equipped with a factory supplied grille



FOCAL® is a trademark of FOCAL-JMLAB®

